



Pendeen Crescent, Southway, Plymouth, PL6 6QS

Tel : 01752 775478

Email : oakwood.office@discoverymat.co.uk



## Attendance Matters



**YOU BELONG HERE!**  
SCHOOL ATTENDANCE MATTERS

**15** minutes late everyday  
↓  
**2** whole weeks of lost learning

## Friday 2nd May 2025

Hello everyone, I hope that you've all been able to enjoy this sunny week.

### **Sun protection**

Please see the information on page 6.

### **Residential return**

Some of our Year 5 pupils enjoyed 3 days away this week at Barton Hall, taking part in a variety of sporting and outdoor activities from climbing to swimming. The children had a fantastic time, the weather certainly helped! A huge thank you to Mr Kelleher and Miss Francis-Lang for accompanying our pupils, ensuring that they were able to take part in this wonderful opportunity.

### **VE Day 8<sup>th</sup> May**

As I'm sure many of you will know it is VE Day next Thursday. We are recognising this important and significant day in school during the week with an assembly on Wednesday and Teachers will be discussing this important event in their classrooms with your children. On Thursday the children, will at lunch time, all receive a celebration cake or biscuit. Special thanks to Susan, our brilliant Oakwood cook for organising this for us.

### **Opportunity to join the Trust Local Advisory Body.**

There is an opportunity for a parent to join our governing body. If you'd like more information and feel that this might be something you may be interested in, then please get in touch using the contact details on this newsletter. We would be very pleased to hear from you.

Enjoy the bank holiday weekend, and we will see you back at Oakwood on Tuesday 6th.  
Mr Arnold and the Oakwood team.

### Diary Dates to Remember

#### **Monday 5th May**

**MAY DAY BANK HOLIDAY**

#### **Tuesday 6th May**

**ZIMMER CLASS LIBRARY TRIP**

#### **Wednesday 7th May**

**YR6 SATS BRIEFING 3.30PM**

#### **Sunday 11th May**

**SCHOOLS MARATHON CHALLENGE**

#### **Tuesday 13th May**

**PRICE CLASS LIBRARY TRIP**

#### **Monday 19th May**

**FOUNDATION MOVIE NIGHT PTFA**

#### **26th May to 30th May**

**HALF TERM**

#### **Wednesday 4th June**

**EYFS AQUARIUM TRIP**

#### **Week of 9th June**

**SPORTS WEEK**

#### **Thursday 12th June**

**KS1 WEMBURY BEACH VSIIT**

#### **Monday 30th June**

**NON PUPIL DAY**

#### **Tuesday 1st July**

**SUMMER FAIR 15.30-17.00**

#### **Monday 14th July**

**YEAR 6 PRODUCTION TO PARENTS 13.30-15.00**

#### **Wed 23rd July**

**SUMMER BREAK**



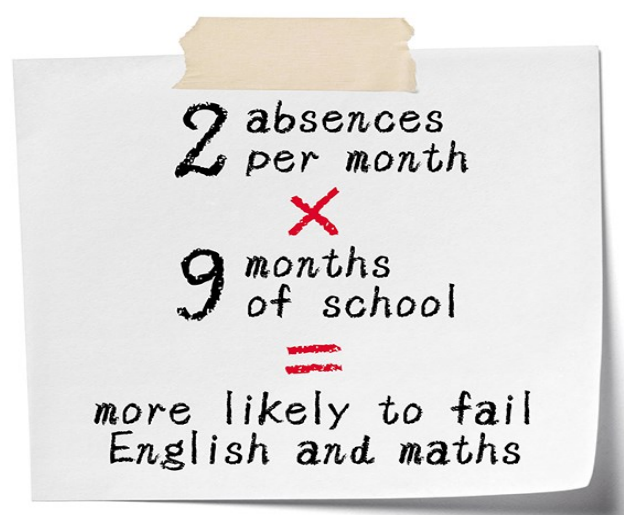
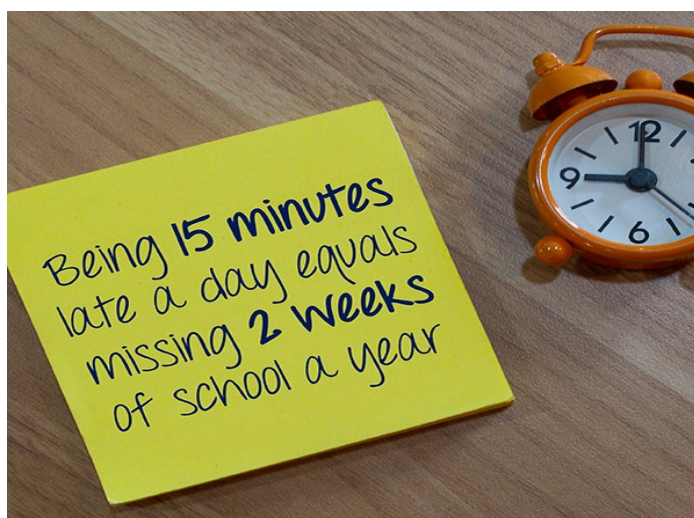
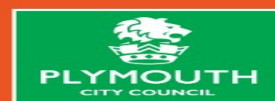
# YOU BELONG HERE!

## SCHOOL ATTENDANCE MATTERS



90% attendance a year = 4 missed weeks of school

If you need help, support or guidance, speak to your child's teacher or visit [www.plymouth.gov.uk/school-matters](http://www.plymouth.gov.uk/school-matters)



A gentle reminder to parents that contact must be made with school on your child's first day of absence and each day until they return to school. If you do not provide a reason for your child's absence, this will be recorded as an unauthorised absence and could result in a penalty notice being issued by Plymouth City Council.

Arriving late for school after 9am will also be recorded as an unauthorised absence.



## **'Good Attendance' means...**

Being in school at least 97% of the time



### **Did you know?**

When children attend school they:

- Can achieve their potential
- Have better career prospects
- Learn how to look after themselves and be healthy
- Grow in confidence
- Keep up with work and homework
- Make new friends

There are  
**365 days**  
in a calendar  
year

**175 days**  
are not  
spent in  
school

### Weekly Attendance for 22nd April to 25th April

The UK Government expectation is **96%**.  
We are striving for children to achieve this, as there is a direct link between attendance and achievement.

This week, our whole school attendance is **93.37%**

**This week's WINNING class is: Bernstein Class**

**MOST IMPROVED class is: Dun Class**


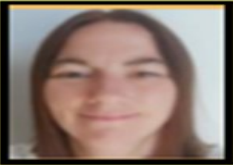



BRAHMS	90%
PRICE	90.43%
VIVALDI	93.60%
ZIMMER	96%
WEBBER	91.54%
BRITTEN	92.11%

BERNSTEIN	97.31%
DUN	87.69%
HOLST	96.15%
ELGAR	97.20%
TCHAIKOVSKY	94.58%



# Family Support Network

		
<p><b>Mrs J Chubb</b> Assistant Head of School</p>	<p><b>Mrs Eliss Lock</b> INCO</p>	<p><b>Mr P Arnold</b> Senior Head of School</p>
<p>Deputy Designated Oakwood Academy Lead for Safeguarding</p>	<p>SEND Support</p>	<p>Designated Oakwood Academy Lead for Safeguarding</p>
<p>Safeguarding Education and Curriculum <u>Behaviour</u> Family Support Service Families</p>	<p>SEND and <u>behaviour-</u> <u>support</u> for parents School Nurse Referrals DLA Applications GP letters</p>	<p>Family Support</p>



## Sun protection



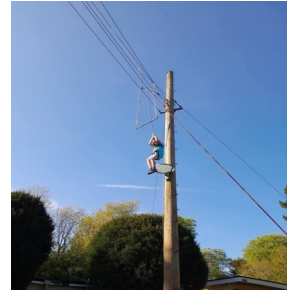
With the sun making a welcome appearance this week, please see the excerpt below from our sun protection policy which can be found on our school website. Covering up and seeking shade are the most important sun protection measures.

In addition, sunscreen can provide protection to exposed skin. However, sunscreen should not be used to increase the amount of time spent in the sun. Pupils are encouraged to apply sunscreen before school starts – SPF 20 or above.

**Staff will not be able to apply sunscreen to pupils during the school day but may supervise self-application.**

## PGL Residential

Some of our Year 5 pupils enjoyed 3 days away this week at Barton Hall, taking part in a variety of sporting and outdoor activities including archery tag and the Trapeze, rifle shooting, aqua fun and swimming, survivor games, abseiling and silent disco. The children had a fantastic time!





OAKWOOD PTFA  
FOUNDATION

# MOVIE NIGHT

19TH MAY | 3:25-4:30

A Magical Tale of Friendship

## LOST AND FOUND



£2.50 PER TICKET  
TO INCLUDE DRINKS  
AND SNACKS

COLLECTION FROM MAIN RECEPTION





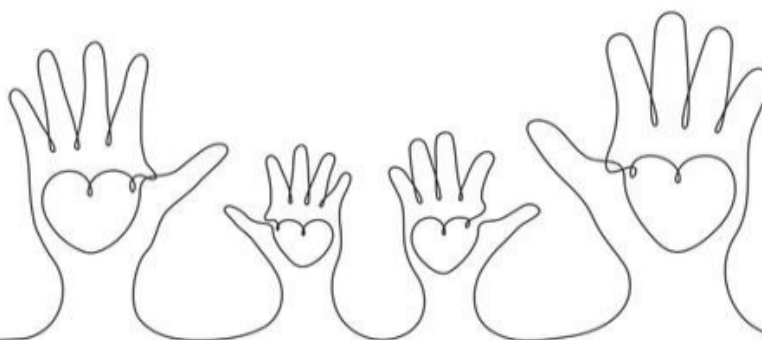
## *FAMILY LEARNING WITH ON COURSE SOUTH WEST*

FREE CRAFT SESSIONS WEDNESDAY MORNINGS 0930 AT OAKWOOD PRIMARY SCHOOL

COME ALONG AND TRY OUT VARIOUS RELAXING CRAFT ACTIVITIES AND LEARN NEW TECHNIQUES IN A FRIENDLY SUPPORTIVE ENVIRONMENT. THIS TERM WE ARE EXPLORING SEWING, EMBROIDERY AND SUMMER THEMED CRAFTS, SUNCATCHERS, GARDEN LIGHT DECORATIONS, TIE DYE AND MORE. SCAN THE QR CODE, TO FIND OUT MORE AND ENROL! COURSE CODE: W109E31S







## "Let's Talk about Children....."

Therapeutic Parenting is a nurturing parenting style developed from consistent, empathic, and emotional based responses to your children as a response to their behaviours.

We believe that all children would benefit from experiencing therapeutic parenting and want to share this parenting style through the use of a 'Therapeutic Toolbox'.

This programme is full to top tips and advice to support your journey of parenting and growing up.



Venue	Session 1	Session 2
Estover Youth centre	Friday 14 <sup>th</sup> June 9:30am-12:30pm	Friday 21 <sup>st</sup> June 9:30am-12:30pm
Keyham Green Places	Wed 18 <sup>th</sup> September 9:30am-12:30pm	Wed 25 <sup>th</sup> September 9:30-12:30pm
Efford Library	Thursday 21 <sup>st</sup> November 11:30am-2:30pm	Thursday 28 <sup>th</sup> November 11:30-2:30pm
Crownhill Library	Friday 7 <sup>th</sup> February 9:30-12:30pm	Friday 14 <sup>th</sup> February 9:30-12:30pm
Estover Youth centre	Tuesday 22 <sup>nd</sup> April 11-2pm	Tuesday 29 <sup>th</sup> April 11-2pm
Efford Library	Thursday 12 <sup>th</sup> June 11:30-2:30pm	Thursday 19 <sup>th</sup> June 11:30-2:30pm

This is a 2 week programme and topics include :

- what does it mean to be a therapeutic parent?
- Emotions
- Anger and aggression
- Managing tricky behaviours
- Play
- Parental self care

<https://www.eventbrite.co.uk/o/plymouth-city-council-targeted-help-60431670123>

# LUNCH MENU

Ham and Cheese wraps are on the menu week commencing 21st April 2025 this will run alongside the new menu as a daily choice.

We have colour choices on parent pay ,  
Purple -cheese and tomato  
orange -ham and tomato  
It consists of a wrap with cucumber sticks.





# WEEK 1

W/C - MONDAY: 21ST APRIL, 12TH MAY, 9TH JUNE, 30TH JUNE, 21ST JULY, 15TH SEPT, 6TH OCT

MONDAY	TUESDAY	WEDNESDAY	THURSDAY	FRIDAY
<b>CHOICE 1 - H</b> Pork hot dog with seasoned potato wedges <b>Allergens:</b> Glu W m/c Se, So	<b>CHOICE 1 - H, V</b> Cheese wheels with herby diced potatoes <b>Allergens:</b> Glu W Mu Mi	<b>CHOICE 1 - H</b> Chicken and veg meatballs served with mash and gravy <b>Allergens:</b> Glu W	<b>CHOICE 1 - H</b> Roast gammon loin with roast potatoes, seasonal vegetables and gravy	<b>CHOICE 1</b> Fish fingers served with fresh chips <b>Allergens:</b> Glu, Wh, F
<b>CHOICE 2 - H, W, V, VE</b> Lentil spaghetti bolognese <b>Allergens:</b> Glu W m/c Bar	<b>CHOICE 2 - H, W, V, VE</b> Vegetable curry with rice	<b>CHOICE 2 - H, V, VE</b> Cheese and bean quesadilla <b>Allergens:</b> Glu W E	<b>CHOICE 2 - H, W, V, VE</b> Mediterranean vegetable tart, roast potatoes, seasonal vegetables and gravy <b>Allergens:</b> Glu W m/c Bar	<b>CHOICE 2 - H, W, V</b> Cheese and tomato quiche served with fresh chips or pasta <b>Allergens:</b> Glu W E Mi

SELECTION OF JACKET POTATOES ARE AVAILABLE EACH DAY: BEANS / CHEESE (MI) / TUNA MAYONNAISE (F E)

<b>DESSERT - V, VE</b> Pears and ice cream <b>Allergens:</b> Mi	<b>DESSERT - H, W, V, VE</b> Apricot flapjack <b>Allergens:</b> Glu O w/c Wh Bar	<b>DESSERT - H, V, VE</b> Custard biscuits served with fruit <b>Allergens:</b> Glu Wh	<b>DESSERT - H, V, VE</b> Fruit platter	<b>DESSERT - H, W, V, VE</b> Oat and date cookie <b>Allergens:</b> Glu Wh O m/c Bar
--	---	--	--	--

AVAILABLE EVERY DAY: FRESH SALAD / SANDWICHES ON REQUEST / FRESH FRUIT AND YOGHURT

Fresh fruit, local Westcountry yoghurt available daily. Fresh drinking water is available throughout the lunch time period. All meals served with seasonal vegetables. Chicken alternatives to beef and pork upon request. One meat free day.

H = HOME-MADE IN THE KITCHEN, W = WHOLE WHEAT INGREDIENTS, VE = VEGAN DISH, V = VEGETARIAN

Allergen Key: Gluten (Glu), Barley (Bar), Wheat (Wh), Oats (O), Soy (S), Soyas (So), Sulphites (Su), Sesame (Se), Peanuts (P), Mustard (Mu), Molluscs (Mo), Milk (Mi), Nuts (N), Eggs (E), Crustaceans (C), Celery (Ce), Fish (F), Lupin (L), m/c May Contain

Climate Friendly

**Did you know**  
You can have mixed or brown rice instead of potatoes!  
Tilda

# WEEK 2

W/C - MONDAY: 28TH APRIL, 19TH MAY, 16TH JUNE, 7TH JULY, 1ST SEPT, 22ND SEPT, 13TH OCT

MONDAY	TUESDAY	WEDNESDAY	THURSDAY	FRIDAY
<b>CHOICE 1 - H, W</b> Beef burger with seasoned wedges <b>Allergens:</b> Glu Wh Su m/c Se	<b>CHOICE 1 - H, W</b> Pork sausage pasta bake <b>Allergens:</b> Glu Wh Ce m/c Mi	<b>CHOICE 1 - H</b> Homemade cheese & tomato pizza <b>Allergens:</b> Glu Wh So Mi	<b>CHOICE 1 - H</b> Roasted pork and beef meatloaf with roast potatoes, seasonal vegetables and gravy	<b>CHOICE 1 - H</b> Homemade breaded haddock fillet served with fresh chips <b>Allergens:</b> Glu Wh E F
<b>CHOICE 2 - H, W, V, VE</b> Vegetable pasta bake <b>Allergens:</b> Glu Wh Mi	<b>CHOICE 2 - H, V</b> Homemade cheese and onion roll served with homemade coleslaw <b>Allergens:</b> Glu Wh Mi E Mu	<b>CHOICE 2 - H, W, V, VE</b> Vegetable chilli served with rice <b>Allergens:</b> m/c Glu Wh Bar	<b>CHOICE 2 - H, V, VE</b> Butternut squash parcell with roast potatoes seasonal vegetables and gravy <b>Allergens:</b> Glu Wh	<b>CHOICE 2 - V, VE</b> Quorn nuggets served with fresh chips <b>Allergens:</b> Glu Wh

SELECTION OF JACKET POTATOES ARE AVAILABLE EACH DAY: BEANS / CHEESE (MI) / TUNA MAYONNAISE (F E)

<b>DESSERT - V</b> Peaches and ice cream <b>Allergens:</b> Mi	<b>DESSERT - H, W, V, VE</b> Oat biscuit bake with fruit <b>Allergens:</b> Glu Wh O m/c Bar	<b>DESSERT - H, V, VE</b> Fruit and Jelly	<b>DESSERT - H, V, VE</b> Fruit Platter	<b>DESSERT - H, W, V</b> Old school iced sponge <b>Allergens:</b> Glu Wh E m/c Bar
--	--	--	--	---

AVAILABLE EVERY DAY: FRESH SALAD / SANDWICHES ON REQUEST / FRESH FRUIT AND YOGHURT

Fresh fruit, local Westcountry yoghurt available daily. Fresh drinking water is available throughout the lunch time period. All meals served with seasonal vegetables. Chicken alternatives to beef and pork upon request. One meat free day.

H = HOME-MADE IN THE KITCHEN, W = WHOLE WHEAT INGREDIENTS, VE = VEGAN DISH, V = VEGETARIAN

Allergen Key: Gluten (Glu), Barley (Bar), Wheat (Wh), Oats (O), Soy (S), Soyas (So), Sulphites (Su), Sesame (Se), Peanuts (P), Mustard (Mu), Molluscs (Mo), Milk (Mi), Nuts (N), Eggs (E), Crustaceans (C), Celery (Ce), Fish (F), Lupin (L), m/c May Contain

Climate Friendly

**Did you know**  
You can have mixed or brown rice instead of potatoes!  
Tilda

# WEEK 3

W/C - MONDAY: 5TH MAY, 2ND JUNE, 23RD JUNE, 14TH JULY, 8TH SEPT, 29TH SEPT, 20TH OCT

MONDAY	TUESDAY	WEDNESDAY	THURSDAY	FRIDAY
<b>CHOICE 1 - H, V</b> Macaroni cheese with garlic bread <b>Allergens:</b> Glu Wh Mu Mi m/c Se	All day breakfast – choose from meat or climate friendly option  <b>Meat Option - H</b> <b>Allergens:</b> Glu Wh E Mi  <b>Climate Friendly - V, VE</b> <b>Allergens:</b> Glu Wh	<b>CHOICE 1 - H, W</b> Spaghetti bolognese <b>Allergens:</b> Glu Wh Ce m/c Bar	<b>CHOICE 1 - H</b> Roast turkey served with roast potatoes seasonal vegetables and gravy <b>Allergens:</b> Glu Wh F	<b>CHOICE 1</b> Salmon bites served with fresh chips or wholemeal pasta <b>Allergens:</b> Glu Wh F
<b>CHOICE 2 - H W V VE</b> Courgette sausage in a hot dog roll with seasoned wedges		<b>CHOICE 2 - H W V VE</b> Quorn dippers served with tomato and vegetable rice <b>Allergens:</b> Glu Wh	<b>CHOICE 2 - H W V VE</b> Vegetable crumble, roast potatoes seasonal vegetables and gravy <b>Allergens:</b> O m/c Bar	<b>CHOICE 2 - H, V</b> French bread pizza served fresh chips or pasta <b>Allergens:</b> Glu Wh Mi m/c So
SELECTION OF JACKET POTATOES ARE AVAILABLE EACH DAY: BEANS / CHEESE (MI) / TUNA MAYONNAISE (F E)				
<b>DESSERT - H W V VE</b> Oat biscuits with fruit <b>Allergens:</b> Glu Wh O Su m/c Bar	<b>DESSERT - H, V</b> Orange jelly and ice cream <b>Allergens:</b> Mi	<b>DESSERT - H W V VE</b> Lemon shortbread with fruit slices <b>Allergens:</b> Glu Wh m/c Bar	<b>DESSERT - H W V VE</b> Fruit Platter	<b>DESSERT - H, W, V</b> Orange drizzle cake <b>Allergens:</b> Glu Wh E Mi m/c Bar
AVAILABLE EVERY DAY: FRESH SALAD / SANDWICHES ON REQUEST / FRESH FRUIT AND YOGHURT				

AVAILABLE EVERY DAY: FRESH SALAD / SANDWICHES ON REQUEST / FRESH FRUIT AND YOGHURT

Fresh fruit, local Westcountry yoghurt available daily. Fresh drinking water is available throughout the lunch time period. All meals served with seasonal vegetables. Chicken alternatives to beef and pork upon request. One meat free day.

H = HOME-MADE IN THE KITCHEN, W = WHOLE WHEAT INGREDIENTS, VE = VEGAN DISH, V = VEGETARIAN.

Allergen Key: Gluten (Glu), Barley (Bar), Wheat (Wh), Oats (O), Rye (R), Soya (So), Sulphites (Sul), Sesame (Se), Peanut (P), Mustard (Mu), Molluscs (Mo), Milk (Mi), Nuts (Nu), Eggs (E), Crustaceans (C), Celery (Ce), Fish (F), Lupin (L), m/c May Contain

Climate Friendly

**DID YOU KNOW**  
You can have mixed or brown rice instead of potatoes!  
Tilda

## ED'S SPECIAL EVENTS

### APRIL

**CATER® 10TH BIRTHDAY**  
(WEDNESDAY 23RD APRIL)

Homemade sausage rolls (H) Glu Wh  
or French bread pizza (H V) Glu Wh Mi  
served with crispy potato cubes and vegetables

**Dessert**  
Victoria Sponge  
(H V) Glu Wh E

### MAY

**INTERNATIONAL FAMILY DAY**  
(THURSDAY 15TH MAY)

Roast chicken, mini sausages & Yorkshire pudding (H) Glu Wh Mi E  
or Potato and broccoli bake (H V) Mi  
served the roast potatoes gravy and vegetables

**Dessert**  
Trifle  
(H V) Glu Wh Mi

### JUNE

**WIMBLEDON**  
(MONDAY 30TH JUNE)

Tennis meatballs in tomato sauce with net spaghetti (H W) Glu Wh or  
Centre court cheese pizza (H V) Glu Wh Mi

**Dessert**  
Scone and jam  
(H) Glu Wh Mi

### JULY

**SCHOOLS OUT FOR SUMMER**  
(VARIOUS DATES IN JULY)

Beef burger in a roll (H) Glu Wh, Su m/c Se  
with potatoes wedges or Macaroni cheese (H V) Glu Wh Mi Mu So

**Dessert**  
Iced cake with sprinkles  
(H V) Glu Wh E

### SEPTEMBER

**ROALD DAHL DAY**  
(FRIDAY 12TH SEPTEMBER)

The Enormous Crocodile's Crunchy Fish Fingers served with The Twits Chips (H) Glu Wh F  
George's Marvellous Medicine Vegetable Stir Fry (H V) Glu Wh So E m/c Mu So

**Dessert**  
Wonka bar  
(H V) Glu Wh

### OCTOBER

**HARVEST FESTIVAL DAY**  
(MONDAY 6TH OCTOBER)

Sausage and vegetable pizza slice (H W) Glu Wh Mi  
with potato wedges or Lentil and vegetable shepherd's pie (H V) m/c Glu Wh Bar

**Dessert**  
Apple cake with custard  
(H W V) Glu Wh E



# CATERED 10TH BIRTHDAY

WEDNESDAY 23RD APRIL 2025

10 YEARS OF YUM-TASTIC FUN AND FOOD



Homemade sausage rolls or French bread pizza  
served with crispy potato cubes and vegetables  
Victoria Sponge Cake (FOR ALLERGY INFO, PLEASE SPEAK TO THE KITCHEN OR SCHOOL)

# TERM DATES 2024/25



Teaching days (statutory)	190
Professional development days	5
Occasional days	5
<b>Sub-total</b>	<b>200</b>
School holidays	52
Bank holidays	8
Saturdays and Sundays	105
<b>Total</b>	<b>365</b>

Term	Start	End	Days
1	03-Sep-24	25-Oct-24	39
2	04-Nov-24	20-Dec-24	35
3	06-Jan-25	14-Feb-25	30
4	24-Feb-25	04-Apr-25	30
5	22-Apr-25	23-May-25	23
6	02-Jun-25	23-Jul-25	38
	<b>Total</b>		<b>195</b>

	SEPTEMBER				
Monday	2	9	16	23	30
Tuesday	3	10	17	24	
Wednesday	4	11	18	25	
Thursday	5	12	19	26	
Friday	6	13	20	27	

	OCTOBER				
	7	14	21	28	
1	8	15	22	29	
2	9	16	23	30	
3	10	17	24	31	
4	11	18	25		

	NOVEMBER				
	4	11	18	25	
	5	12	19	26	
	6	13	20	27	
	7	14	21	28	
1	8	15	22	29	

	DECEMBER				
2	9	16	23	30	
3	10	17	24	31	
4	11	18	25		
5	12	19	26		
6	13	20	27		

	JANUARY				
Monday		6	13	20	27
Tuesday		7	14	21	28
Wednesday	1	8	15	22	29
Thursday	2	9	16	23	30
Friday	3	10	17	24	31

	FEBRUARY				
3	10	17	24		
4	11	18	25		
5	12	19	26		
6	13	20	27		
7	14	21	28		

	MARCH				
3	10	17	24	31	
4	11	18	25		
5	12	19	26		
6	13	20	27		
7	14	21	28		

	APRIL				
	7	14	21	28	
1	8	15	22	29	
2	9	16	23	30	
3	10	17	24		
4	11	18	25		

	MAY				
Monday		5	12	19	26
Tuesday		6	13	20	27
Wednesday		7	14	21	28
Thursday	1	8	15	22	29
Friday	2	9	16	23	30

	JUNE				
2	9	16	23	30	
3	10	17	24		
4	11	18	25		
5	12	19	26		
6	13	20	27		

	JULY				
	7	14	21	28	
1	8	15	22	29	
2	9	16	23	30	
3	10	17	24	31	
4	11	18	25		

	AUGUST				
	4	11	18	25	
	5	12	19	26	
	6	13	20	27	
	7	14	21	28	
1	8	15	22	29	

## TERM DATES 2025/26



Teaching days (statutory)	190
Professional development days	5
Occasional days	5
<b>Sub-total</b>	<b>200</b>
School holidays	53
Bank holidays	8
Saturdays and Sundays	104
<b>Total</b>	<b>365</b>

Term	Start	End	Days
1	03-Sep-25	24-Oct-25	39
2	03-Nov-25	19-Dec-25	35
3	05-Jan-26	13-Feb-26	30
4	23-Feb-26	02-Apr-26	30
5	20-Apr-26	22-May-26	23
6	01-Jun-26	23-Jul-26	38
	<b>Total</b>		<b>195</b>

	SEPTEMBER				
Monday	1	8	15	22	29
Tuesday	2	9	16	23	30
Wednesday	3	10	17	24	
Thursday	4	11	18	25	
Friday	5	12	19	26	

	OCTOBER				
	6	13	20	27	
	7	14	21	28	
1	8	15	22	29	
2	9	16	23	30	
3	10	17	24	31	

	NOVEMBER				
3	10	17	24		
4	11	18	25		
5	12	19	26		
6	13	20	27		
7	14	21	28		

	DECEMBER				
1	8	15	22	29	
2	9	16	23	30	
3	10	17	24	31	
4	11	18	25		
5	12	19	26		

	JANUARY				
Monday		5	12	19	26
Tuesday		6	13	20	27
Wednesday		7	14	21	28
Thursday	1	8	15	22	29
Friday	2	9	16	23	30

	FEBRUARY				
2	9	16	23		
3	10	17	24		
4	11	18	25		
5	12	19	26		
6	13	20	27		

	MARCH				
2	9	16	23	30	
3	10	17	24	31	
4	11	18	25		
5	12	19	26		
6	13	20	27		

	APRIL				
	6	13	20	27	
	7	14	21	28	
1	8	15	22	29	
2	9	16	23	30	
3	10	17	24		

	MAY				
Monday		4	11	18	25
Tuesday		5	12	19	26
Wednesday		6	13	20	27
Thursday		7	14	21	28
Friday	1	8	15	22	29

	JUNE				
1	8	15	22	29	
2	9	16	23	30	
3	10	17	24		
4	11	18	25		
5	12	19	26		

	JULY				
	6	13	20	27	
	7	14	21	28	
1	8	15	22	29	
2	9	16	23	30	
3	10	17	24	31	

	AUGUST				
3	10	17	24	31	
4	11	18	25		
5	12	19	26		
6	13	20	27		
7	14	21	28		

2x 0.5 Days Available for Beechwood and Oakwood



## Free School Meals

You may be entitled to apply for Free School Meals for your child/ren if you receive the following benefits:-

- Universal Credit, Income Support
- Income Based Job Seekers Allowance,
- Income Related Element of Employment and Support Allowance,
- Guaranteed Credit element of Pension Credit
- Child Tax Credit (without Working Tax Credit) with an annual income of £16,190 or less.

We would urge parents who may be eligible for Free School Meals for the children to either apply on-line through the Plymouth City Council website or contact the school office for a form as soon as possible. This is very important, even if your child does not wish to take up the free meal. The register of FSM entitlement affects our overall school budget and we may be missing out on funding as a result.

Please do not confuse this with Universal Free School Meal entitlement for children in Years Reception to Year Two.



## KS2 REN reading word count

The winners of this weeks word count for is:-

**Years 1 and 2 – ZIMMER– 7663 WORDS**

**Year 3 – BRITTEN—53 031 WORDS**

**Years 4 and 5 – HOLST—117 358 WORDS**

**Year 6 – ELGAR—111 336 WORDS**



## Keeping in Touch

Can we please remind parents that the vast majority of contact between school and parents is done by telephone or email. Please could you ensure that we are kept updated with you current contact details to enable us to keep in touch with you when needed.

## Parent Pay

Please activate your parent pay account as this allows us to send Newsletters, trip letters and other important information that we may need to convey to you. Please contact the school office if you need assistance.

## Facebook and Website

Please follow us on our Facebook page at Oakwood Primary Academy.  
Please refer to our school website for latest news and calendar dates.

## Email Addresses to Remember

**Year 6 - Elgar Class** - r.sherrell@discoverymat.co.uk

**Year 6 - Tchaikovsky Class** - s.betts@discoverymat.co.uk

**Year 4/5 - Bernstein Class** – j.kelleher@discoverymat.co.uk

**Year 4/5 - Dun Class** – k.loftus@discoverymat.co.uk

**Year 4/5 - Holst Class** – l.crocker@discoverymat.co.uk or k.harvey@discoverymat.co.uk

**Year 3 - Britten Class** - a.moore@discoverymat.co.uk

**Year 3 - Lloyd-Webber Class** – s.wieprecht@discoverymat.co.uk or a.blakeston@discoverymat.co.uk

**Year 2 - Zimmer Class** – m.francis@discoverymat.co.uk

**Year 1/2 - Vivaldi Class** – t.ocarroll@discoverymat.co.uk or h.waite@discoverymat.co.uk

**Year R/1 - Price Class** – c.wye@discoverymat.co.uk or h.waite@discoverymat.co.uk

**Rec - Brahms Class** – m.kelly@discoverymat.co.uk