



Pendeen Crescent, Southway, Plymouth, PL6 6QS

Tel : 01752 775478

Email : oakwood.office@discoverymat.co.uk



Attendance Matters



YOU BELONG HERE!
SCHOOL ATTENDANCE MATTERS

15 minutes late everyday
↓
2 whole weeks of lost learning

Friday 4th April 2025

Hello everyone, end of term already!

Please see the letter sent out to you all this morning.

Wishing you all a Happy Easter and we look forward to seeing you all back on Tuesday 22nd April.

Mr Arnold and the Oakwood Team



Diary Dates to Remember

7th April to 21st April

EASTER BREAK

Tuesday 22nd April

CLASS & YR6 LEAVERS PHOTO-GRAPHS

PGL TRIP MEETING 3.30PM

Tuesday 29th April

VIVALDI CLASS LIBRARY TRIP

Monday 5th May

MAY DAY BANK HOLIDAY

Tuesday 6th May

ZIMMER CLASS LIBRARY TRIP

Sunday 11th May

SCHOOLS MARATHON CHALLENGE

Tuesday 13th May

PRICE CLASS LIBRARY TRIP

26th May to 30th May

HALF TERM

Wednesday 4th June

EYFS AQUARIUM TRIP

Thursday 12th June

KS1 WEMBURY BEACH VSIIT

Monday 30th June

NON PUPIL DAY

Monday 14th July

**YEAR 6 PRODUCTION TO PARENTS
13.30-15.00**

Wed 23rd July

SUMMER BREAK



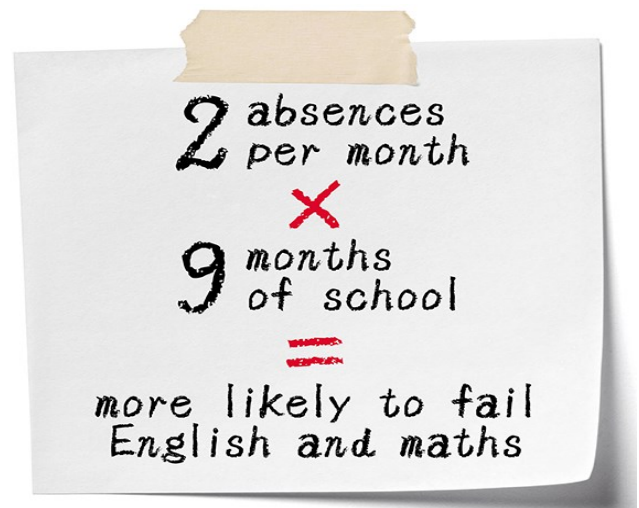
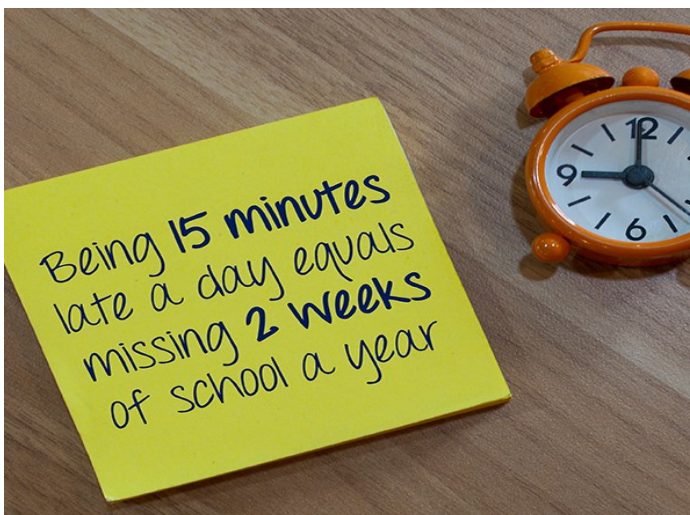
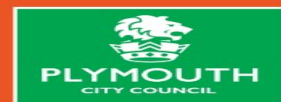
YOU BELONG HERE!

SCHOOL ATTENDANCE MATTERS



90% attendance a year = 4 missed weeks of school

If you need help, support or guidance, speak to your child's teacher or visit www.plymouth.gov.uk/school-matters



A gentle reminder to parents that contact must be made with school on your child's first day of absence and each day until they return to school. If you do not provide a reason for your child's absence, this will be recorded as an unauthorised absence and could result in a penalty notice being issued by Plymouth City Council.

Arriving late for school after 9am will also be recorded as an unauthorised absence.

'Good Attendance' means...

Being in school at least 97% of the time



Did you know?

When children attend school they:

- Can achieve their potential
- Have better career prospects
- Learn how to look after themselves and be healthy
- Grow in confidence
- Keep up with work and homework
- Make new friends

There are
365 days
in a calendar
year

175 days
are not
spent in
school

Weekly Attendance for 31st March to 4th April

The UK Government expectation is **96%**.
We are striving for children to achieve this, as there is a direct link between attendance and achievement.

This week, our whole school attendance is **89.68%**
This week's **WINNING** class is: **BRITTEN Class**
MOST IMPROVED class is: **TCHAIKOVSKY Class**



BRAHMS	95.28%
PRICE	83.04%
VIVALDI	82.80%
ZIMMER	88.33%
WEBBER	87.31%
BRITTEN	97.89%

BERNSTEIN	88%
DUN	83.33%
HOLST	96.15%
ELGAR	88.80%
TCHAIKOVSKY	97.50%



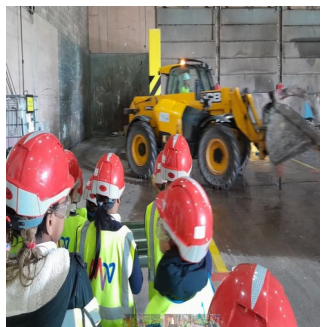
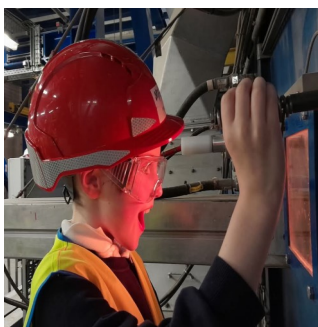
Family Support Network

		
<p>Mrs J Chubb Assistant Head of School</p>	<p>Mrs Eliss Lock INCO</p>	<p>Mr P Arnold Senior Head of School</p>
<p>Deputy Designated Oakwood Academy Lead for Safeguarding</p>	<p>SEND Support</p>	<p>Designated Oakwood Academy Lead for Safeguarding</p>
<p>Safeguarding</p> <p>Education and Curriculum</p> <p><u>Behaviour</u></p> <p>Family Support</p> <p>Service Families</p>	<p>SEND and <u>behaviour-</u> <u>support</u> for parents</p> <p>School Nurse Referrals</p> <p>DLA Applications</p> <p>GP letters</p>	<p>Family Support</p>

Zimmer's plants are growing nicely. The children are measuring their plants each week to record in their seed diary. They have noticed that the seed without sunlight is growing the quickest, but it is yellow. The other plants are green and healthy but have not grown as much. The seeds without water and in the fridge have not germinated.



Holst, Dun and Bernstein class all had a brilliant day at @Devonport Efw CHP Facility learning about where our waste goes and how it is used to produce energy for the Dockyard and the National Grid. They especially enjoyed watching the rubbish being unloaded and learning about its journey through the plant before being turned into power. We even came away with recycled pencils made from old £5 notes! A big thank you to Jade and Mel for hosting us.



'Eggcellent' creations

I can honestly say that I have never seen such an amazing array of Easter bonnets and Easter baskets that I have this week at Oakwood Primary and that's no 'yolk'!

The children showed off their designs by parading throughout the school and in assembly this morning, everyone was mightily impressed. Thank you to all the children (and parents) that entered our competition and helped make our Easter assembly such a 'eggstravagant' one!

Year 6 1st Prize - Elly Runner Up – Scarlett

Year 5 1st Prize - Aleksander Runner Up - Eliza K/ Millie S

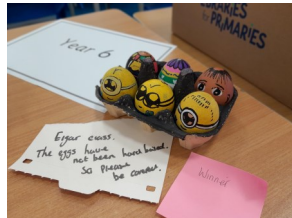
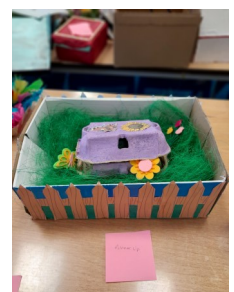
Year 4 1st Prize - Luna Runner Up - Daisy P

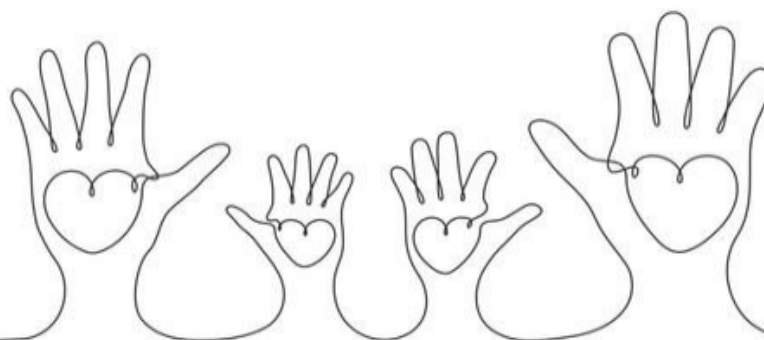
Year 3 1st Prize - Olivia K Runner Up - Daisy

Year 2 1st Prize - Samuel A Runner Up - Odin H

Year 1 1st Prize - Finnley Runner Up - Leona

Overall Winner - Dollie-Love





"Let's Talk about Children....."

Therapeutic Parenting is a nurturing parenting style developed from consistent, empathic, and emotional based responses to your children as a response to their behaviours.

We believe that all children would benefit from experiencing therapeutic parenting and want to share this parenting style through the use of a 'Therapeutic Toolbox'.

This programme is full to top tips and advice to support your journey of parenting and growing up.



Venue	Session 1	Session 2
Estover Youth centre	Friday 14 th June 9:30am-12:30pm	Friday 21 st June 9:30am-12:30pm
Keyham Green Places	Wed 18 th September 9:30am-12:30pm	Wed 25 th September 9:30-12:30pm
Efford Library	Thursday 21 st November 11:30am-2:30pm	Thursday 28 th November 11:30-2:30pm
Crownhill Library	Friday 7 th February 9:30-12:30pm	Friday 14 th February 9:30-12:30pm
Estover Youth centre	Tuesday 22 nd April 11-2pm	Tuesday 29 th April 11-2pm
Efford Library	Thursday 12 th June 11:30-2:30pm	Thursday 19 th June 11:30-2:30pm

This is a 2 week programme and topics include :

- what does it mean to be a therapeutic parent?
- Emotions
- Anger and aggression
- Managing tricky behaviours
- Play
- Parental self care

<https://www.eventbrite.co.uk/o/plymouth-city-council-targeted-help-60431670123>

LUNCH MENU

Ham and Cheese wraps are on the menu week commencing 21st April 2025 this will run alongside the new menu as a daily choice.

We have colour choices on parent pay ,
Purple -cheese and tomato
orange -ham and tomato
It consists of a wrap with cucumber sticks.



WEEK 1

W/C - MONDAY: 21ST APRIL, 12TH MAY, 9TH JUNE, 30TH JUNE, 21ST JULY, 15TH SEPT, 6TH OCT

MONDAY	TUESDAY	WEDNESDAY	THURSDAY	FRIDAY
CHOICE 1 - H Pork hot dog with seasoned potato wedges Allergens: Glu W m/c Se, So	CHOICE 1 - H, V Cheese wheels with herby diced potatoes Allergens: Glu W Mu Mi	CHOICE 1 - H Chicken and veg meatballs served with mash and gravy Allergens: Glu W	CHOICE 1 - H Roast gammon loin with roast potatoes, seasonal vegetables and gravy	CHOICE 1 Fish fingers served with fresh chips Allergens: Glu, Wh, F
CHOICE 2 - H, W, V, VE Lentil spaghetti bolognese Allergens: Glu W m/c Bar	CHOICE 2 - H, W, V, VE Vegetable curry with rice	CHOICE 2 - H, V, VE Cheese and bean quesadilla Allergens: Glu W E	CHOICE 2 - H, W, V, VE Mediterranean vegetable tart, roast potatoes, seasonal vegetables and gravy Allergens: Glu W m/c Bar	CHOICE 2 - H, W, V Cheese and tomato quiche served with fresh chips or pasta Allergens: Glu W E Mi

SELECTION OF JACKET POTATOES ARE AVAILABLE EACH DAY: BEANS / CHEESE (MI) / TUNA MAYONNAISE (F E)

DESSERT - V, VE Pears and ice cream Allergens: Mi	DESSERT - H, W, V, VE Apricot flapjack Allergens: Glu O w/c Wh Bar	DESSERT - H, V, VE Custard biscuits served with fruit Allergens: Glu Wh	DESSERT - H, V, VE Fruit platter	DESSERT - H, W, V, VE Oat and date cookie Allergens: Glu Wh O m/c Bar
--------------------------------------------------------------------------	-------------------------------------------------------------------------------------------	------------------------------------------------------------------------------------------------	--------------------------------------------	----------------------------------------------------------------------------------------------

AVAILABLE EVERY DAY: FRESH SALAD / SANDWICHES ON REQUEST / FRESH FRUIT AND YOGHURT

Fresh fruit, local Westcountry yoghurt available daily. Fresh drinking water is available throughout the lunch time period. All meals served with seasonal vegetables. Chicken alternatives to beef and pork upon request. One meat free day.

H = HOME-MADE IN THE KITCHEN, W = WHOLE WHEAT INGREDIENTS, VE = VEGAN DISH, V = VEGETARIAN

Allergen Key: Gluten (Glu), Barley (Bar), Wheat (Wh), Oats (O), Soy (S), Soyas (So), Sulphites (Su), Sesame (Se), Peanuts (P), Mustard (Mu), Molluscs (Mo), Milk (Mi), Nuts (N), Eggs (E), Crustaceans (C), Celery (Ce), Fish (F), Lupin (L), m/c May Contain

Climate Friendly

Did you know?
You can have mixed or brown rice instead of potatoes!
Tilda

WEEK 2

W/C - MONDAY: 28TH APRIL, 19TH MAY, 16TH JUNE, 7TH JULY, 1ST SEPT, 22ND SEPT, 13TH OCT

MONDAY	TUESDAY	WEDNESDAY	THURSDAY	FRIDAY
CHOICE 1 - H, W Beef burger with seasoned wedges Allergens: Glu Wh Su m/c Se	CHOICE 1 - H, W Pork sausage pasta bake Allergens: Glu Wh Ce m/c Mi	CHOICE 1 - H Homemade cheese & tomato pizza Allergens: Glu Wh So Mi	CHOICE 1 - H Roasted pork and beef meatloaf with roast potatoes, seasonal vegetables and gravy	CHOICE 1 - H Homemade breaded haddock fillet served with fresh chips Allergens: Glu Wh E F
CHOICE 2 - H, W, V, VE Vegetable pasta bake Allergens: Glu Wh Mi	CHOICE 2 - H, V Homemade cheese and onion roll served with homemade coleslaw Allergens: Glu Wh Mi E Mu	CHOICE 2 - H, W, V, VE Vegetable chilli served with rice Allergens: m/c Glu Wh Bar	CHOICE 2 - H, V, VE Butternut squash parcell with roast potatoes seasonal vegetables and gravy Allergens: Glu Wh	CHOICE 2 - V, VE Quorn nuggets served with fresh chips Allergens: Glu Wh

SELECTION OF JACKET POTATOES ARE AVAILABLE EACH DAY: BEANS / CHEESE (MI) / TUNA MAYONNAISE (F E)

DESSERT - V Peaches and ice cream Allergens: Mi	DESSERT - H, W, V, VE Oat biscuit bake with fruit Allergens: Glu Wh O m/c Bar	DESSERT - H, V, VE Fruit and Jelly	DESSERT - H, V, VE Fruit Platter	DESSERT - H, W, V Old school iced sponge Allergens: Glu Wh E m/c Bar
------------------------------------------------------------------------	------------------------------------------------------------------------------------------------------	----------------------------------------------	--------------------------------------------	---------------------------------------------------------------------------------------------

AVAILABLE EVERY DAY: FRESH SALAD / SANDWICHES ON REQUEST / FRESH FRUIT AND YOGHURT

Fresh fruit, local Westcountry yoghurt available daily. Fresh drinking water is available throughout the lunch time period. All meals served with seasonal vegetables. Chicken alternatives to beef and pork upon request. One meat free day.

H = HOME-MADE IN THE KITCHEN, W = WHOLE WHEAT INGREDIENTS, VE = VEGAN DISH, V = VEGETARIAN

Allergen Key: Gluten (Glu), Barley (Bar), Wheat (Wh), Oats (O), Soy (S), Soyas (So), Sulphites (Su), Sesame (Se), Peanuts (P), Mustard (Mu), Molluscs (Mo), Milk (Mi), Nuts (N), Eggs (E), Crustaceans (C), Celery (Ce), Fish (F), Lupin (L), m/c May Contain

Climate Friendly

Did you know?
You can have mixed or brown rice instead of potatoes!
Tilda

WEEK 3

W/C - MONDAY: 5TH MAY, 2ND JUNE, 23RD JUNE, 14TH JULY, 8TH SEPT, 29TH SEPT, 20TH OCT

MONDAY	TUESDAY	WEDNESDAY	THURSDAY	FRIDAY
CHOICE 1 - H, V Macaroni cheese with garlic bread Allergens: Glu Wh Mu Mi m/c Se	All day breakfast - choose from meat or climate friendly option Meat Option - H Allergens: Glu Wh E Mi Climate Friendly - V, VE Allergens: Glu Wh	CHOICE 1 - H, W Spaghetti bolognese Allergens: Glu Wh Ce m/c Bar	CHOICE 1 - H Roast turkey served with roast potatoes seasonal vegetables and gravy	CHOICE 1 Salmon bites served with fresh chips or wholemeal pasta Allergens: Glu Wh F
CHOICE 2 - H W V VE Courgette sausage in a hot dog roll with seasoned wedges		CHOICE 2 - H W V VE Quorn dippers served with tomato and vegetable rice Allergens: Glu Wh	CHOICE 2 - H W V VE Vegetable crumble, roast potatoes seasonal vegetables and gravy Allergens: O m/c Bar	CHOICE 2 - H, V French bread pizza served fresh chips or pasta Allergens: Glu Wh Mi m/c So
SELECTION OF JACKET POTATOES ARE AVAILABLE EACH DAY: BEANS / CHEESE (MI) / TUNA MAYONNAISE (F E)				
DESSERT - H W V VE Oat biscuits with fruit Allergens: Glu Wh O Su m/c Bar	DESSERT - H, V Orange jelly and ice cream Allergens: Mi	DESSERT - H W V VE Lemon shortbread with fruit slices Allergens: Glu Wh m/c Bar	DESSERT - H W V VE Fruit Platter	DESSERT - H, W, V Orange drizzle cake Allergens: Glu Wh E Mi m/c Bar

AVAILABLE EVERY DAY: FRESH SALAD / SANDWICHES ON REQUEST / FRESH FRUIT AND YOGHURT

Fresh fruit, local Westcountry yoghurt available daily. Fresh drinking water is available throughout the lunch time period. All meals served with seasonal vegetables. Chicken alternatives to beef and pork upon request. One meat free day.

H = HOME-MADE IN THE KITCHEN, W = WHOLE WHEAT INGREDIENTS, VE = VEGAN DISH, V = VEGETARIAN.

Allergen Key: Gluten (Glu), Barley (Bar), Wheat (Wh), Oats (O), Rye (R), Soya (So), Sulphites (Sul), Sesame (Se), Peanut (P), Mustard (Mu), Molluscs (Mo), Milk (Mi), Nuts (N), Eggs (E), Crustaceans (C), Celery (Ce), Fish (F), Lupin (L), m/c May Contain

Climate Friendly

DID YOU KNOW
You can have mixed or brown rice instead of potatoes!
Tilda

ED'S SPECIAL EVENTS

APRIL

CATER® 10TH BIRTHDAY
(WEDNESDAY 23RD APRIL)

Homemade sausage rolls (H) Glu Wh
or French bread pizza (H V) Glu Wh Mi
served with crispy potato cubes and vegetables

Dessert
Victoria Sponge
(H V) Glu Wh E

MAY

INTERNATIONAL FAMILY DAY
(THURSDAY 15TH MAY)

Roast chicken, mini sausages & Yorkshire pudding (H) Glu Wh Mi E
or Potato and broccoli bake (H V) Mi
served the roast potatoes gravy and vegetables

Dessert
Trifle
(H V) Glu Wh Mi

JUNE

WIMBLEDON
(MONDAY 30TH JUNE)

Tennis meatballs in tomato sauce with net spaghetti (H W) Glu Wh or
Centre court cheese pizza (H V) Glu Wh Mi

Dessert
Scone and jam
(H) Glu Wh Mi

JULY

SCHOOLS OUT FOR SUMMER
(VARIOUS DATES IN JULY)

Beef burger in a roll (H) Glu Wh, Su m/c Se
with potatoes wedges or Macaroni cheese (H V) Glu Wh Mi Mu

Dessert
Iced cake with sprinkles
(H V) Glu Wh E

SEPTEMBER

ROALD DAHL DAY
(FRIDAY 12TH SEPTEMBER)

The Enormous Crocodile's Crunchy Fish Fingers served with The Twits Chips (H) Glu Wh F
George's Marvellous Medicine Vegetable Stir Fry (H V) Glu Wh So E m/c Mu Se

Dessert
Wonka bar
(H V) Glu Wh

OCTOBER

HARVEST FESTIVAL DAY
(MONDAY 6TH OCTOBER)

Sausage and vegetable pizza slice (H W) Glu Wh Mi
with potato wedges or Lentil and vegetable shepherd's pie (H V) m/c Glu Wh Bar

Dessert
Apple cake with custard
(H W V) Glu Wh E

STAY UP TO DATE:



facebook.com/plymouthcatered



@cateredplymouth



@cateredplymouth



@cateredplymouth

CATERED 10TH BIRTHDAY

WEDNESDAY 23RD APRIL 2025

10 YEARS OF YUM-TASTIC FUN AND FOOD



Homemade sausage rolls or French bread pizza
served with crispy potato cubes and vegetables
Victoria Sponge Cake (FOR ALLERGY INFO, PLEASE SPEAK TO THE KITCHEN OR SCHOOL)

TERM DATES 2024/25



Teaching days (statutory)	190
Professional development days	5
Occasional days	5
Sub-total	200
School holidays	52
Bank holidays	8
Saturdays and Sundays	105
Total	365

Term	Start	End	Days
1	03-Sep-24	25-Oct-24	39
2	04-Nov-24	20-Dec-24	35
3	06-Jan-25	14-Feb-25	30
4	24-Feb-25	04-Apr-25	30
5	22-Apr-25	23-May-25	23
6	02-Jun-25	23-Jul-25	38
	Total		195

	SEPTEMBER				
Monday	2	9	16	23	30
Tuesday	3	10	17	24	
Wednesday	4	11	18	25	
Thursday	5	12	19	26	
Friday	6	13	20	27	

	OCTOBER				
	7	14	21	28	
1	8	15	22	29	
2	9	16	23	30	
3	10	17	24	31	
4	11	18	25		

	NOVEMBER				
	4	11	18	25	
	5	12	19	26	
	6	13	20	27	
	7	14	21	28	
1	8	15	22	29	

	DECEMBER				
2	9	16	23	30	
3	10	17	24	31	
4	11	18	25		
5	12	19	26		
6	13	20	27		

	JANUARY				
Monday		6	13	20	27
Tuesday		7	14	21	28
Wednesday	1	8	15	22	29
Thursday	2	9	16	23	30
Friday	3	10	17	24	31

	FEBRUARY				
3	10	17	24		
4	11	18	25		
5	12	19	26		
6	13	20	27		
7	14	21	28		

	MARCH				
3	10	17	24	31	
4	11	18	25		
5	12	19	26		
6	13	20	27		
7	14	21	28		

	APRIL				
	7	14	21	28	
1	8	15	22	29	
2	9	16	23	30	
3	10	17	24		
4	11	18	25		

	MAY				
Monday		5	12	19	26
Tuesday		6	13	20	27
Wednesday		7	14	21	28
Thursday	1	8	15	22	29
Friday	2	9	16	23	30

	JUNE				
2	9	16	23	30	
3	10	17	24		
4	11	18	25		
5	12	19	26		
6	13	20	27		

	JULY				
	7	14	21	28	
1	8	15	22	29	
2	9	16	23	30	
3	10	17	24	31	
4	11	18	25		

	AUGUST				
	4	11	18	25	
	5	12	19	26	
	6	13	20	27	
	7	14	21	28	
1	8	15	22	29	

TERM DATES 2025/26



Teaching days (statutory)	190
Professional development days	5
Occasional days	5
Sub-total	200
School holidays	53
Bank holidays	8
Saturdays and Sundays	104
Total	365

Term	Start	End	Days
1	03-Sep-25	24-Oct-25	39
2	03-Nov-25	19-Dec-25	35
3	05-Jan-26	13-Feb-26	30
4	23-Feb-26	02-Apr-26	30
5	20-Apr-26	22-May-26	23
6	01-Jun-26	23-Jul-26	38
	Total		195

	SEPTEMBER				
Monday	1	8	15	22	29
Tuesday	2	9	16	23	30
Wednesday	3	10	17	24	
Thursday	4	11	18	25	
Friday	5	12	19	26	

	OCTOBER				
	6	13	20	27	
	7	14	21	28	
1	8	15	22	29	
2	9	16	23	30	
3	10	17	24	31	

	NOVEMBER				
3	10	17	24		
4	11	18	25		
5	12	19	26		
6	13	20	27		
7	14	21	28		

	DECEMBER				
1	8	15	22	29	
2	9	16	23	30	
3	10	17	24	31	
4	11	18	25		
5	12	19	26		

	JANUARY				
Monday		5	12	19	26
Tuesday		6	13	20	27
Wednesday		7	14	21	28
Thursday	1	8	15	22	29
Friday	2	9	16	23	30

	FEBRUARY				
2	9	16	23		
3	10	17	24		
4	11	18	25		
5	12	19	26		
6	13	20	27		

	MARCH				
2	9	16	23	30	
3	10	17	24	31	
4	11	18	25		
5	12	19	26		
6	13	20	27		

	APRIL				
	6	13	20	27	
	7	14	21	28	
1	8	15	22	29	
2	9	16	23	30	
3	10	17	24		

	MAY				
Monday		4	11	18	25
Tuesday		5	12	19	26
Wednesday		6	13	20	27
Thursday		7	14	21	28
Friday	1	8	15	22	29

	JUNE				
1	8	15	22	29	
2	9	16	23	30	
3	10	17	24		
4	11	18	25		
5	12	19	26		

	JULY				
	6	13	20	27	
	7	14	21	28	
1	8	15	22	29	
2	9	16	23	30	
3	10	17	24	31	

	AUGUST				
3	10	17	24	31	
4	11	18	25		
5	12	19	26		
6	13	20	27		
7	14	21	28		

2x 0.5 Days Available for Beechwood and Oakwood

Free School Meals

You may be entitled to apply for Free School Meals for your child/ren if you receive the following benefits:-

- Universal Credit, Income Support
- Income Based Job Seekers Allowance,
- Income Related Element of Employment and Support Allowance,
- Guaranteed Credit element of Pension Credit
- Child Tax Credit (without Working Tax Credit) with an annual income of £16,190 or less.

We would urge parents who may be eligible for Free School Meals for the children to either apply on-line through the Plymouth City Council website or contact the school office for a form as soon as possible. This is very important, even if your child does not wish to take up the free meal. The register of FSM entitlement affects our overall school budget and we may be missing out on funding as a result.

Please do not confuse this with Universal Free School Meal entitlement for children in Years Reception to Year Two.



KS2 REN reading word count

The winners of this weeks word count for is:-

Years 1 and 2 – VIVALDI - 7714 WORDS

Year 3 – BRITTEN—104 310 WORDS

Years 4 and 5 – HOLST—138 716 WORDS

Year 6 – ELGAR—274 591 WORDS



Keeping in Touch

Can we please remind parents that the vast majority of contact between school and parents is done by telephone or email. Please could you ensure that we are kept updated with you current contact details to enable us to keep in touch with you when needed.

Parent Pay

Please activate your parent pay account as this allows us to send Newsletters, trip letters and other important information that we may need to convey to you. Please contact the school office if you need assistance.

Facebook and Website

Please follow us on our Facebook page at Oakwood Primary Academy.
Please refer to our school website for latest news and calendar dates.

Email Addresses to Remember

Year 6 - Elgar Class - r.sherrell@discoverymat.co.uk

Year 6 - Tchaikovsky Class - s.betts@discoverymat.co.uk

Year 4/5 - Bernstein Class – j.kelleher@discoverymat.co.uk

Year 4/5 - Dun Class – k.loftus@discoverymat.co.uk

Year 4/5 - Holst Class – l.crocker@discoverymat.co.uk or k.harvey@discoverymat.co.uk

Year 3 - Britten Class - a.moore@discoverymat.co.uk

Year 3 - Lloyd-Webber Class – s.wieprecht@discoverymat.co.uk or a.blakeston@discoverymat.co.uk

Year 2 - Zimmer Class – m.francis@discoverymat.co.uk

Year 1/2 - Vivaldi Class – t.ocarroll@discoverymat.co.uk or h.waite@discoverymat.co.uk

Year R/1 - Price Class – c.wye@discoverymat.co.uk or h.waite@discoverymat.co.uk

Rec - Brahms Class – m.kelly@discoverymat.co.uk